

Notes

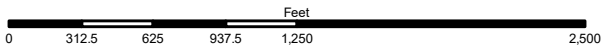
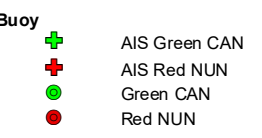
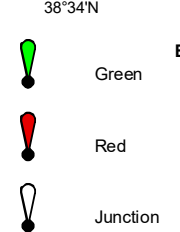
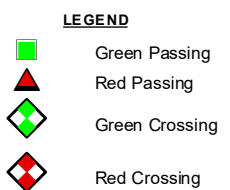
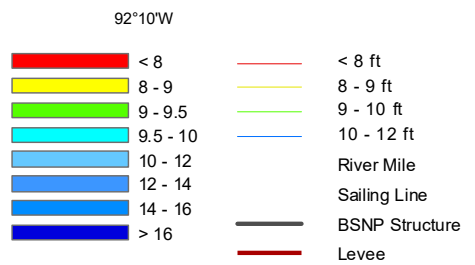
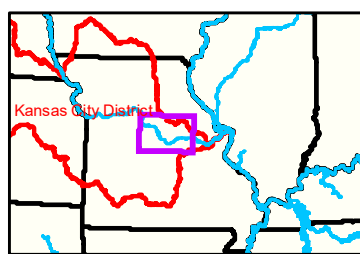
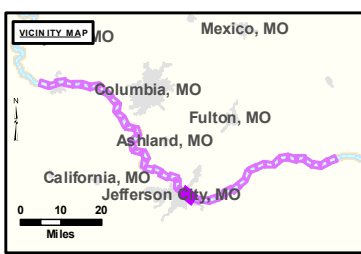
Jefferson City Gage = 10.6 at time of collection 21 April 2021

Callaway County

WS ELV 529.28 at time of collection 21 April 2021

Jefferson City Gage = 10.6 at time of collection 21 April 2021"

Gage\_L



**NOTES:**  
 Horizontal Coordinate System:  
 World Geodetic System of 1984 (WGS84), projected to the Universal Transverse Mercator (UTM) Zone 15 North. Units in U.S. Survey Feet  
 Vertical Datum:  
 Soundings are shown in feet and indicated depths are referenced to water surface at time of collection.  
 The information depicted on this map represents the results of a survey conducted on the date indicated and can only be considered to represent the general condition existing at that time.  
 The location of navigation aids are based on and provided by the U.S. Coast Guard.



**DISCLAIMER:** The U.S. Army Corps of Engineers (USACE) provides this information as a service to the public. It is not intended to be used for any purpose other than that for which it was provided. The USACE makes no warranty, express or implied, regarding the accuracy, reliability, or completeness of the information. The user assumes all liability for any use of the information. The USACE is not responsible for any errors or omissions in this information. The USACE is not responsible for any damages, including consequential damages, arising from the use of this information. The USACE is not responsible for any actions taken based on this information. The USACE is not responsible for any actions taken based on this information.

KANSAS CITY DISTRICT MISSOURI RIVER AREA OFFICE	
Submitted By:	MIRA/O
Reviewed By:	MIRA/O
Checked By:	MIRA/O
Approved:	

**Survey Information**  
 MO\_02\_LMR  
 MO\_02\_LMR\_20210421\_CS\_142\_0\_144\_0\_SORT  
 21 April 2021

**Sheet Number**  
 20 of 46

92°11'W

38°36'N

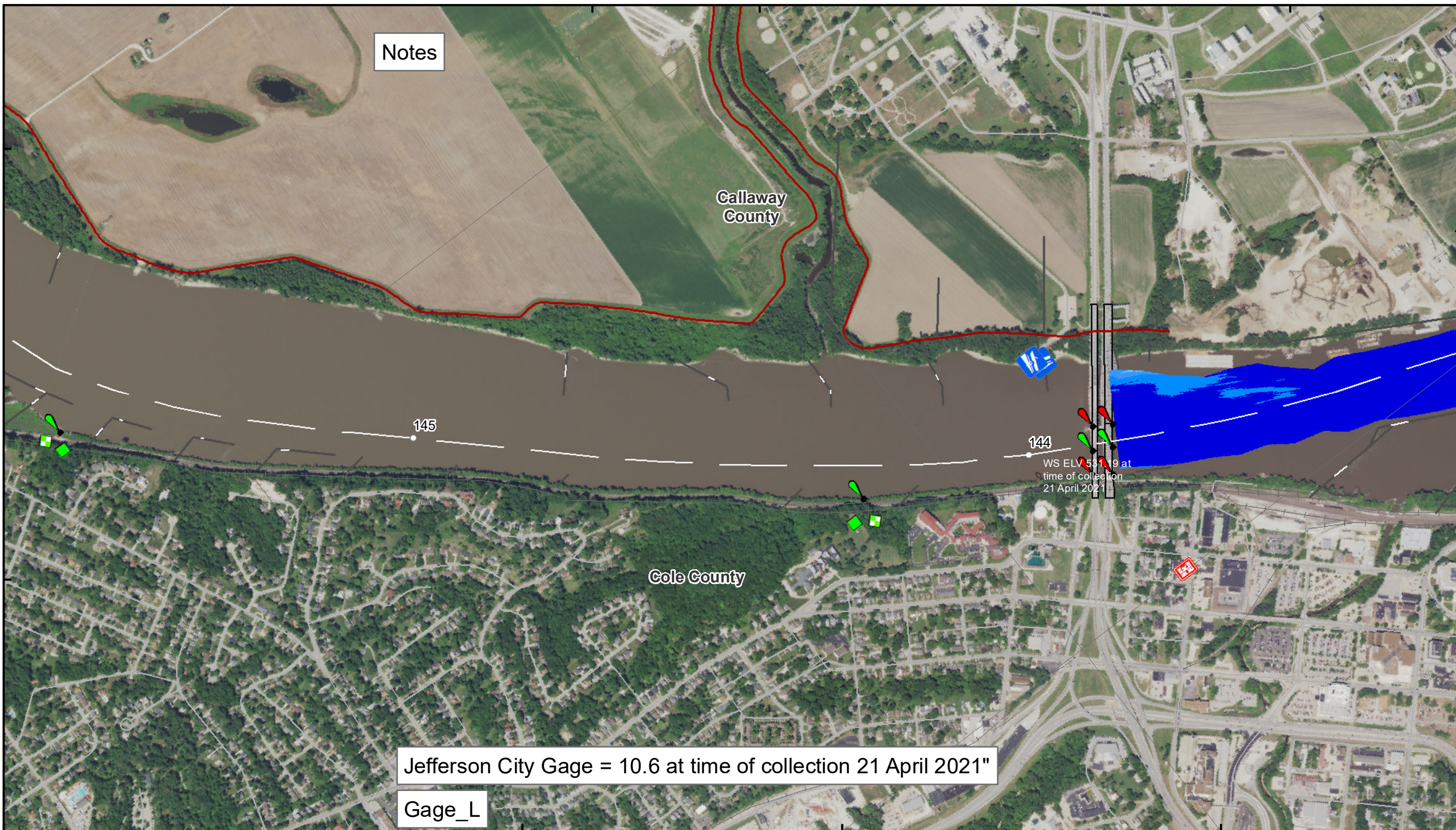
92°10'W

92°12'W

38°36'N

92°10'W

38°35'N

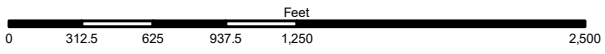
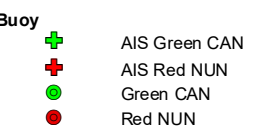
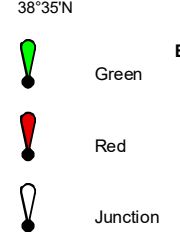
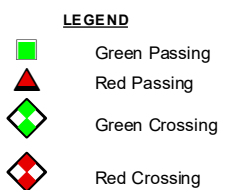
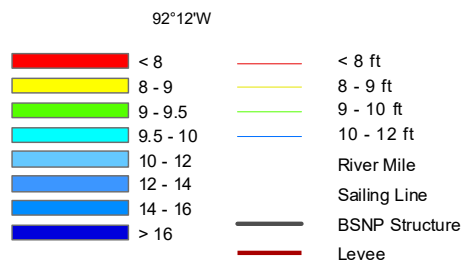
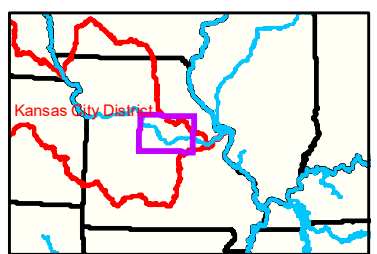
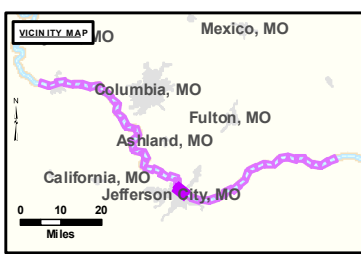


Notes

Jefferson City Gage = 10.6 at time of collection 21 April 2021"

Gage\_L

WS ELV 531.19 at time of collection 21 April 2021



**NOTES:**  
 Horizontal Coordinate System:  
 World Geodetic System of 1984 (WGS84), projected to the Universal Transverse Mercator (UTM) Zone 15 North. Distance units in U.S. Survey Feet

Vertical Datum:  
 Soundings are shown in feet and indicated depths are referenced to water surface at time of collection.

The information depicted on this map represents the results of a survey conducted on the date indicated and can only be considered to represent the general condition existing at that time.

The location of navigation aids are based on and provided by the U.S. Coast Guard.



**DISCLAIMER:** The U.S. Army Corps of Engineers (USACE) provides this information for informational purposes only. It is not intended for use in any legal proceeding or as a basis for any claim. The USACE makes no warranty, express or implied, regarding the accuracy, completeness, or reliability of the information provided. The USACE is not responsible for any errors or omissions in this information, or for any consequences arising from its use. The information is provided as a service to the public and is not to be construed as an offer of insurance or any other financial product. The USACE is not a financial institution and does not provide any financial services. The information is provided as a service to the public and is not to be construed as an offer of insurance or any other financial product. The USACE is not a financial institution and does not provide any financial services.

KANSAS CITY DISTRICT MISSOURI RIVER AREA OFFICE	
Submitted By:	MIRAO
Reviewed By:	MIRAO
Checked By:	MIRAO
Approved:	

**Survey Information**  
 MO\_02\_LMR  
 MO\_02\_LMR\_20210421\_CS\_142\_0\_144\_0\_SORT  
 21 April 2021

**Sheet Number**  
 21 of 46